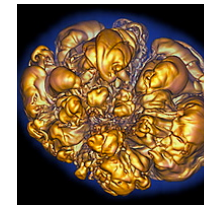
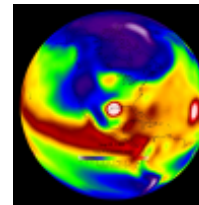
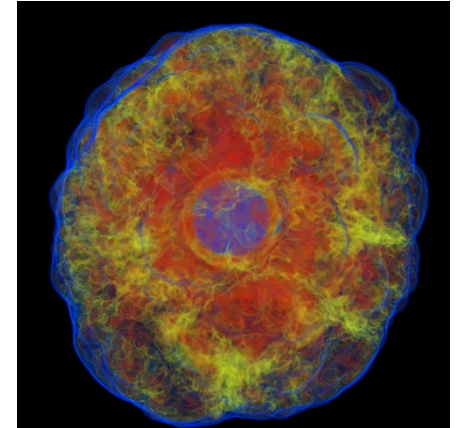
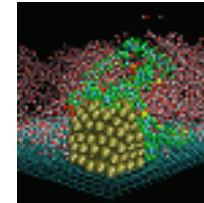
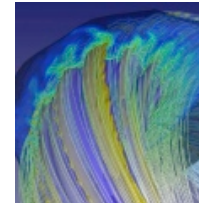
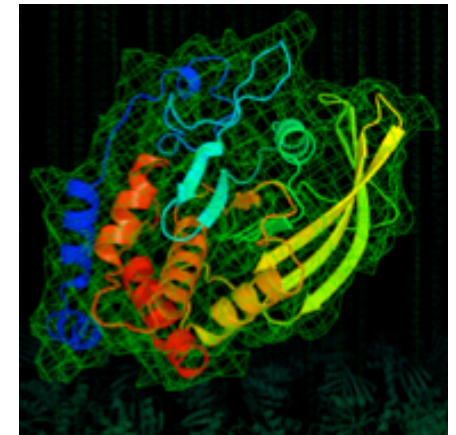
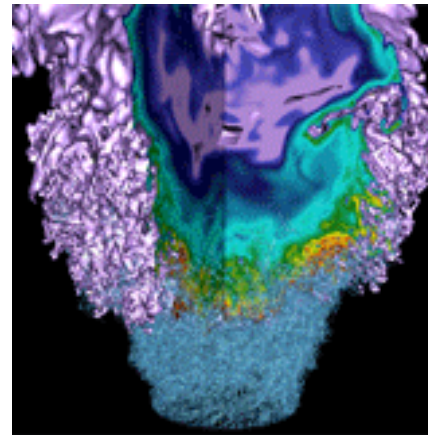


Edison and Cori Status Update



Doug Jacobsen
Tina Butler
Tina Declerck

Recent Changes - Edison



- **Move from Oakland -> Wang Hall**
 - **Edison powered off for move 11/30/15**
 - **Physical move completed 12/07**
 - **/scratch3 upgraded to Lustre 2.5 with GRIDRAID**
 - **Edison transitioned to native SLURM**
 - **System returned to users 01/04/16**
- **Building power issues caused Edison outages on 01/22, 01/28 and 02/27.**
- **Updated SLURM Scheduling Logic and Priorities to improve throughput (reduce waittime)**

Recent Changes - Cori



- **Cray DataWarp –several updates to improve access and performance related issues.**
- **Updated SLURM Scheduling Logic and Priorities to improve throughput (reduce waittimes)**
- **Cori Phase 1 system has been accepted**

- **/scratch3 performance issues**
 - Waiting for software update from Seagate to address regression
- **/scratch1 and /scratch2 too full**
 - Decreasing purge time to 8 weeks starting 1 Apr to address
- **Maintenances**
 - Increased RSIP ports
 - Some users had experienced issues with running out of ports this should resolve
 - Installed additional LNET nodes
 - Will allow access to cori's /global/cscratch1 file system once all configurations are in place

- **File system issues with several disks becoming unavailable causing outages**
 - **A fix is currently in test and will be installed when available.**
- **SLURM**
 - **Delays in scheduling – priority and backfill related issues**
 - **Working on configuration changes**
 - **Working with SchedMD on some improvements**

- **Mounting /global/cscratch1 from Cori**
 - Working on configuration changes on Edison and Cori
- **Upgrade Edison /scratch1 and /scratch2 to Lustre 2.5**
 - Destructive upgrade
 - Waiting for /global/cscratch1 mount to provide backup space for user files
- **Upgrade to CLE 6.0**
 - Cori planned end of May
 - Extended downtime – at least 1 week expected
 - Edison planned to update after Cori phase 2 acceptance
- **SLURM tuning**

NERSC

Thank you – Questions?